



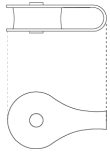
HORIZONTAL FIXING KIT

INSTRUCTION MANUAL

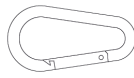


HORIZONTAL FIXING KIT

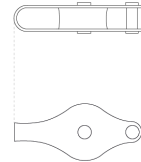
The horizontal fixing kits provide an easy method of rigging and remove your Shade Sail. The kit is deconstructed on arrival, and is a combination of the fixings listed below. Post and Wall anchor fittings are not included in the adjustable fixing kits, and can be purchased online separately.



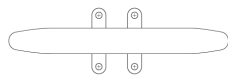
1 x Pulley Block 2 (*PLAIN BLOCK*)
KSFXTB2



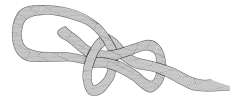
2 x Carbine Hook
KSFXT9060



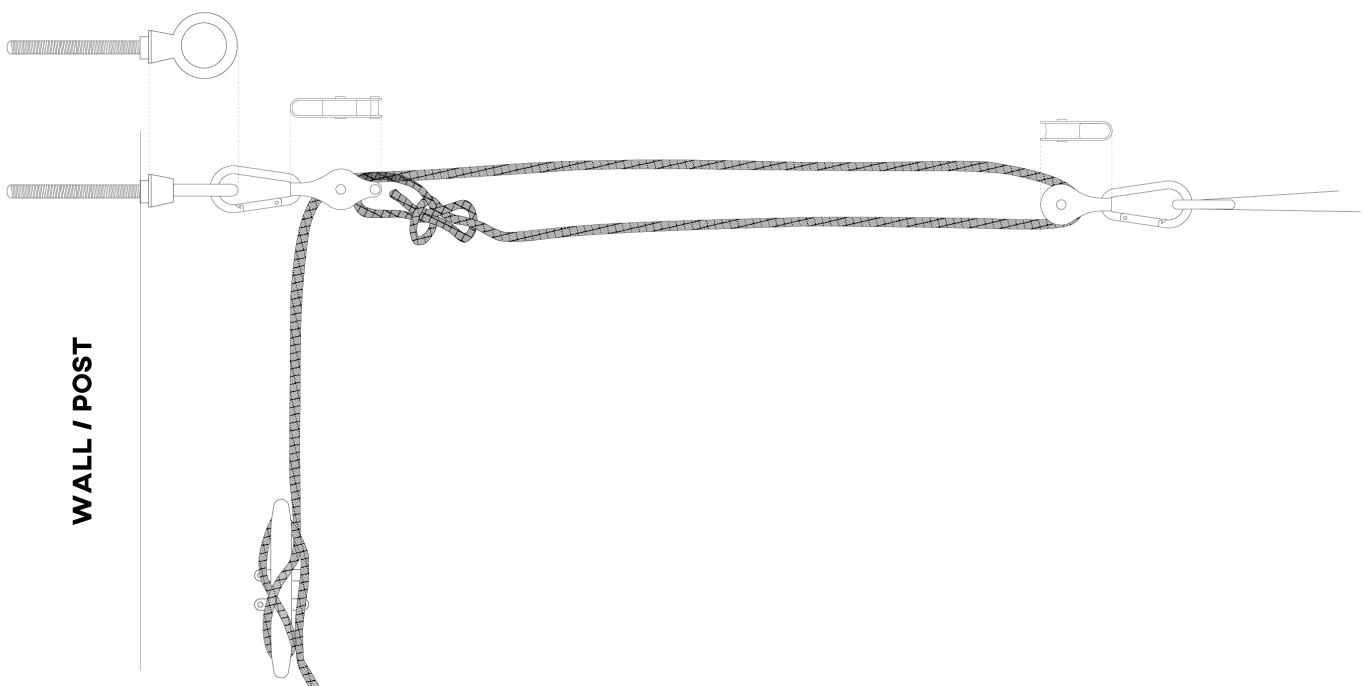
1 x Pulley Block 1 (*WITH BECKETT*)
KSFXTB1



1 x Cross End Cleat
KSFXT414D



1 x 6mm Braided Rope
KSFXT5MWWW





HOW TO FIT

To assemble your fixing kit you may need some basic hand tools

CORDLESS DRILL



HANDHELD PLIERS

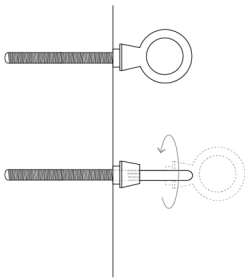


SCREW DRIVER



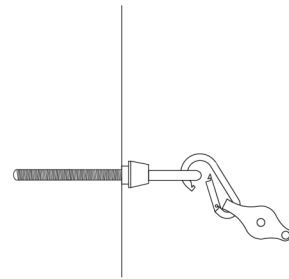
- STEP 1 -

Fasten chosen anchorage fixing into position.



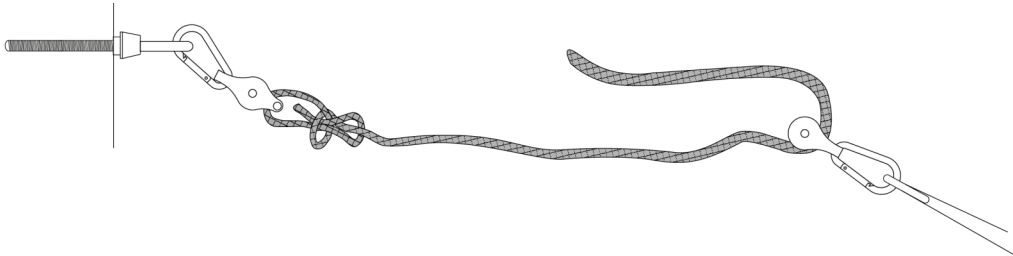
- STEP 12 -

Attach 1 x Carbine Hook and 1 x Pulley Block 1.



- STEP 3 -

Tie rope onto pulley block (IDEALLY BOWLINE) and thread through Pulley Block 2.



- STEP 4 -

Thread remain rope back through Pulley Block 1 and instal 1 x Cross end Cleat to desired position. Tension Shade Sail

